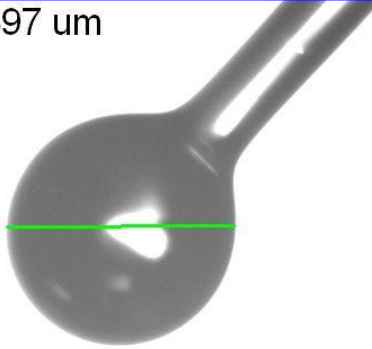


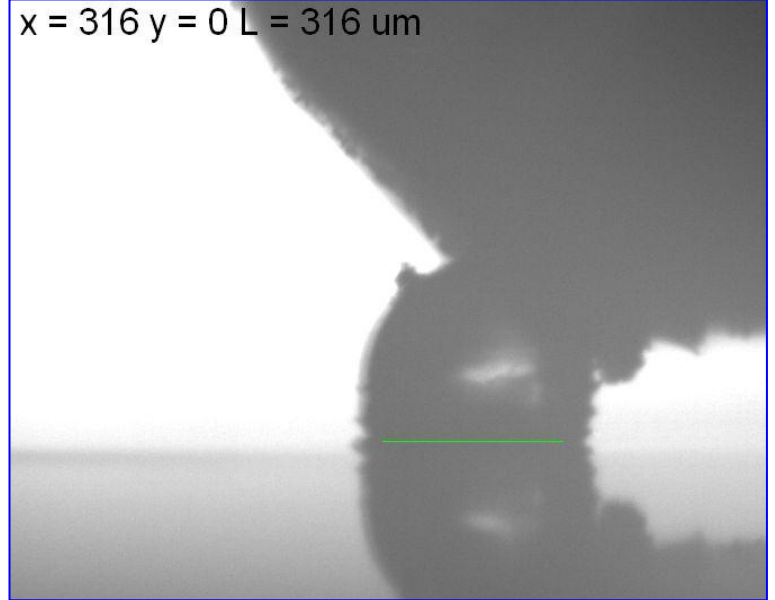
Polishing progression for ball lens fiber sample # 1

$x = 397$   $y = 2$   $L = 397$   $\mu\text{m}$



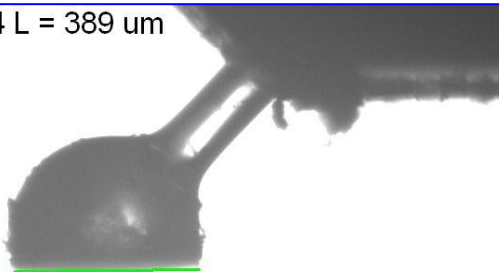
Initial measurement before polishing

$x = 316$   $y = 0$   $L = 316$   $\mu\text{m}$



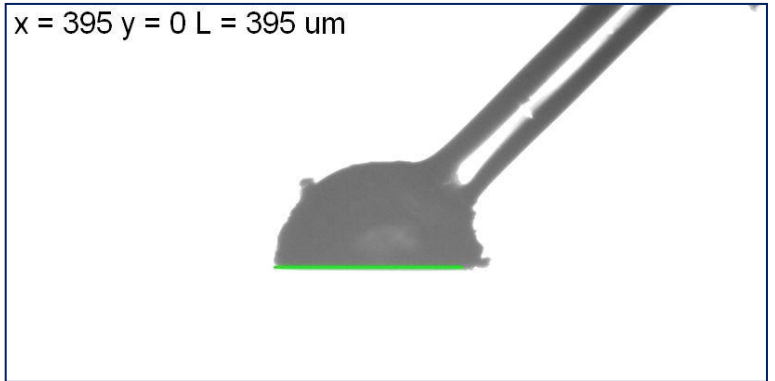
In-process lens polishing

$x = 389$   $y = 4$   $L = 389$   $\mu\text{m}$



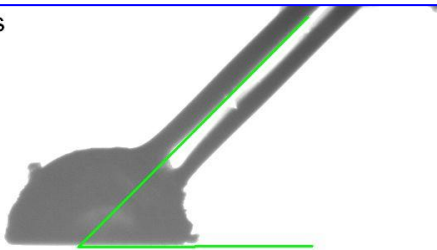
Mid-process measurement

$x = 395$   $y = 0$   $L = 395$   $\mu\text{m}$

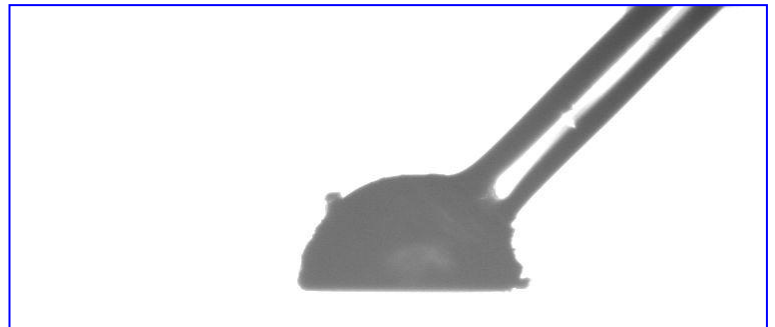


Final polish

Angle = 45 degrees



Angle measurement



July 31, 2017